

Heat Simulation Test

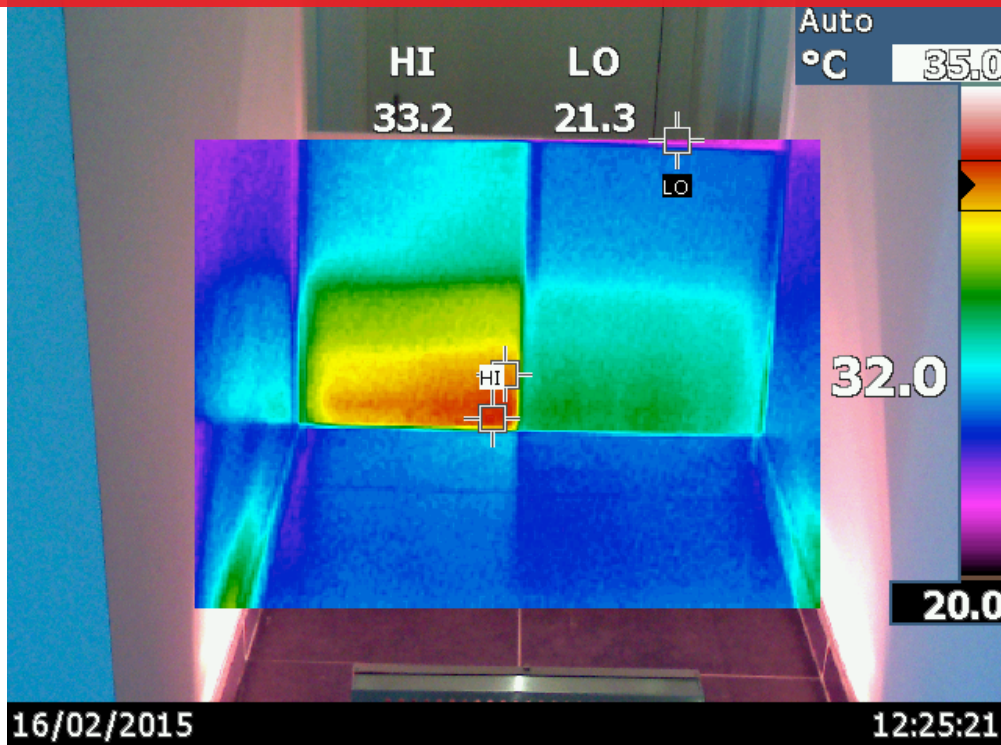
In this document we give you the reislust of a test using an IR heat lamp.

Cold klimaten with heating simulation:

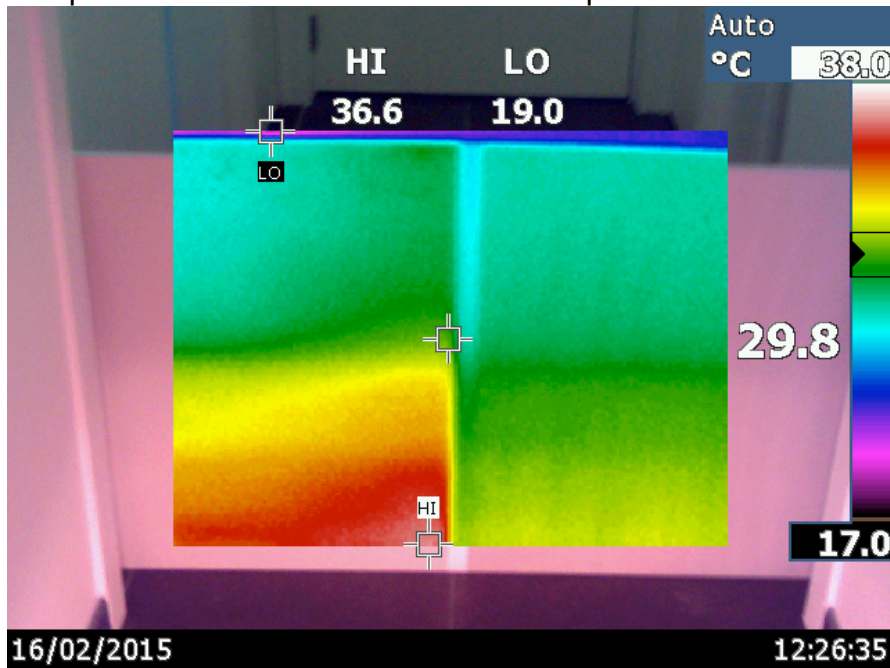
To to simulate the heating of a building we used an Electric IR heat radiator. For the wall, we took a 9 mm plasterboard. We split the plate into two parts, one with 1 layer INSUL8deco essential, oen part with a standard wall latex paint.



With a Fluke IR25 infrared camera we have made images of the operation.



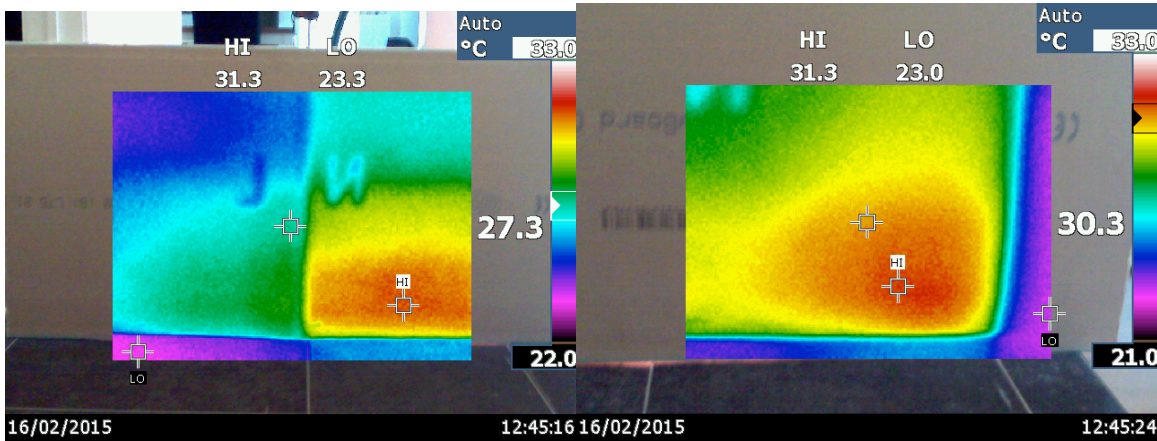
Here you can see an image like it would be on the inside side of a building. At the left you have the acrylic ordinary wall paint, at the right side INSUL8DECO ESSENTIAL. Temperature differences are measured up to 7°C.





Wiser With Energy

On the outside, the back of the gypsum board plate we measure a difference of 3°C. On the front side, the letters L and N are applied with aluminum foil. L stands for Liquisol and N for normal.



You notice that the impact of our technology is impressive.
This every minute, hour and day that you use heat energy to increase your comfort.